

PK 50002 EH

PALFINGER

LIFETIME EXCELLENCE

**FUNCTIONAL DESIGN. BETTER LOOKS
AND INCREASED OPERATIONAL COMFORT
DURING THE ENTIRE LIFETIME.**



LIFETIME EXCELLENCE

PALFINGER LOADER CRANES ARE CONVINCING DUE TO THEIR SUPERIOR LIFE-CYCLE PERFORMANCE. THEY ARE THE MOST ECONOMICAL AND ALSO THE MOST RELIABLE OVER THE ENTIRE PRODUCT LIFE. FROM SOLUTION FINDING TO RESALE.

BETTER
SOLUTIONS

BETTER
EFFICIENCY

BETTER
ERGONOMICS

HIGHER VALUE
RETENTION



HIGHER
AVAILABILITY

HIGHER
SERVICEABILITY

BETTER
ECOLOGY

MORE
RELIABILITY



OPERATOR-FRIENDLY PRODUCT DESIGN





- More efficiency with fly jib due to DPS Plus
- Maximum utilisation of the working range thanks to HPSC
- Additional applications due to Power Link Plus
- Continuous slewing for increased efficiency and speed
- Increased operating times due to low-maintenance extension system



FIRST-RATE IN DESIGN AND PERFORMANCE

12 HIGHLIGHTS



CONTINUOUS SLEWING SYSTEM
UNRESTRICTED MOVEMENT

More efficient in operation due to faster loading cycles, since the crane can be slewed over a shorter distance. The crane works more efficiently and faster.



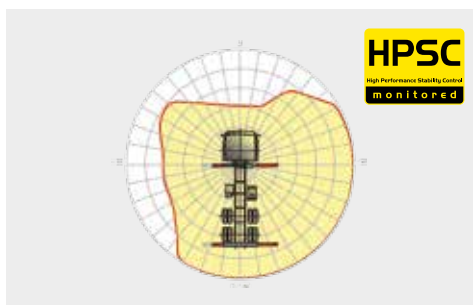
POWER LINK PLUS
HIGH VARIETY OF USES

With the 15-degree reverse linkage system, you can reach through low door openings and also work inside buildings. Heavy crane work – even in difficult conditions.



LOW-MAINTENANCE EXTENSION SYSTEM
REDUCES SERVICE TIME

With sliding elements made of synthetic material and the high-quality KTL coating, this boom system significantly simplifies service performed by the operator. This saves time and money – and protects the environment.



HPSC
MAXIMUM UTILISATION OF THE WORKING RANGE

The variable stabiliser positioning of the High Performance Stability Control System makes it possible to utilise the lifting capacity to the maximum. It enables working within tight spaces.



HIGH SPEED EXTENSION
FOR EFFICIENT ASSIGNMENTS

The High Speed Extension speeds up the extension boom system. Crane works faster and more efficiently.



RADIO REMOTE CONTROL
DIALOGUE WITH THE OPERATOR

PALFINGER radio remote controls are equipped with linear lever or cross lever and provide the greatest possible comfort for the operator. All EH models with LED-Display inform the crane operator about the different operating conditions.



POWER LINK CABLE WINCH
MORE COMFORT IN CABLE WINCH OPERATION

Characterised by low installation height, it is ideal for working inside buildings and transports with the crane boom unfolded. The Comfort Cable Routing reduces set-up times to a minimum.



FUNCTIONAL DESIGN
PRACTICAL AND ATTRACTIVE

Robust plastic covers protect crane parts against dirt and damage. Better appearance and increased operational comfort – during the entire lifetime.



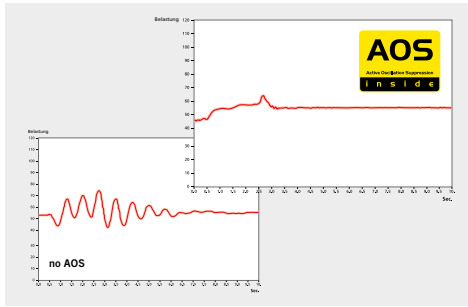
KTL – CATHODIC DIP PAINTING
FOR RETAINING HIGH VALUE

The UV-resistant coating guarantees long-term surface protection. Perfect appearance during the entire lifetime for maximum resale value.



HOSE EQUIPMENT FOR ATTACHMENTS
VERSATILE AND USER-FRIENDLY

The hose equipment offers an easy means of connecting auxiliary equipment. The hose equipment is guided in hose trays for protection.



AOS
MAXIMUM PRECISION AND SAFETY

The active oscillation suppression system prevents "post-oscillation" in the event of rapid braking or load changes. The stress peaks on the extension boom system are reduced and material fatigue and wear are minimised. This increases the resale value.



DPS PLUS
MORE EFFICIENT FLY-JIB OPERATION

The Dual Power System allows multiple uses of the crane both for large outreaches as well as for heavy load operation.

KTL
protected

Paltronic 50
controlled

RRC
Radio Remote Control
operated

HPSC
High Performance Stability Control
monitored

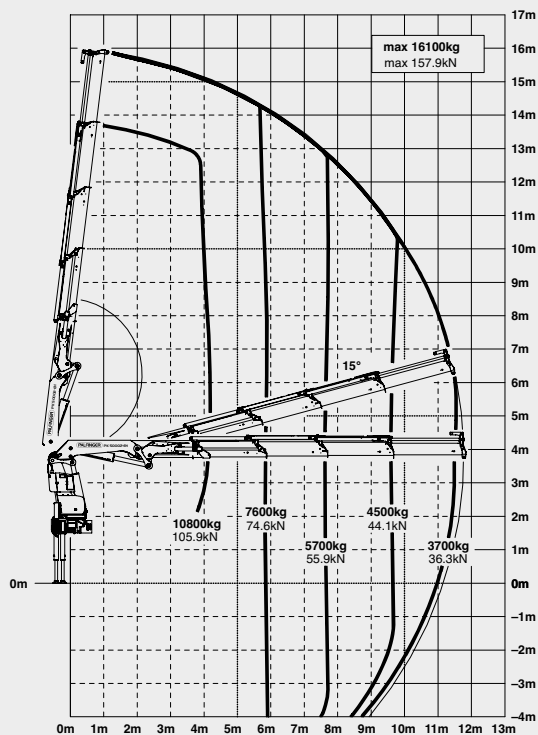
AOS
Active Oscillation Suppression
inside

DPS plus
Dual Power System
activated

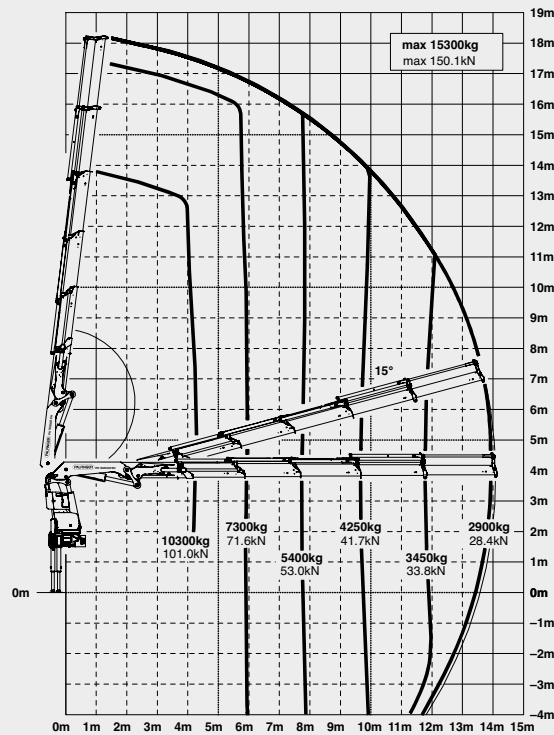
* Optional features / country-specific equipment

PK 50002 HIGH PERFORMANCE

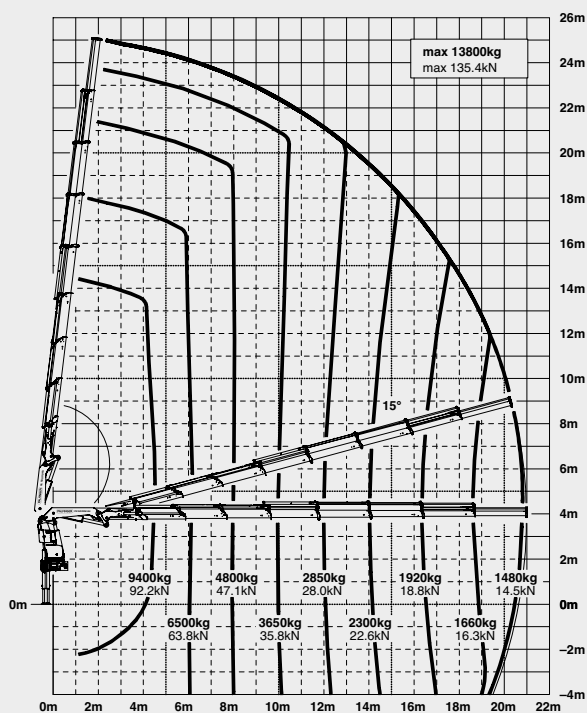
C



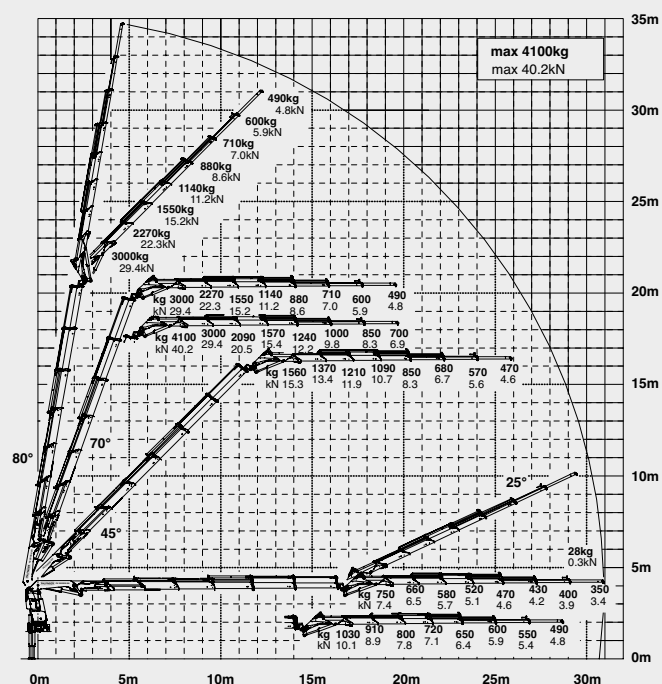
D



G

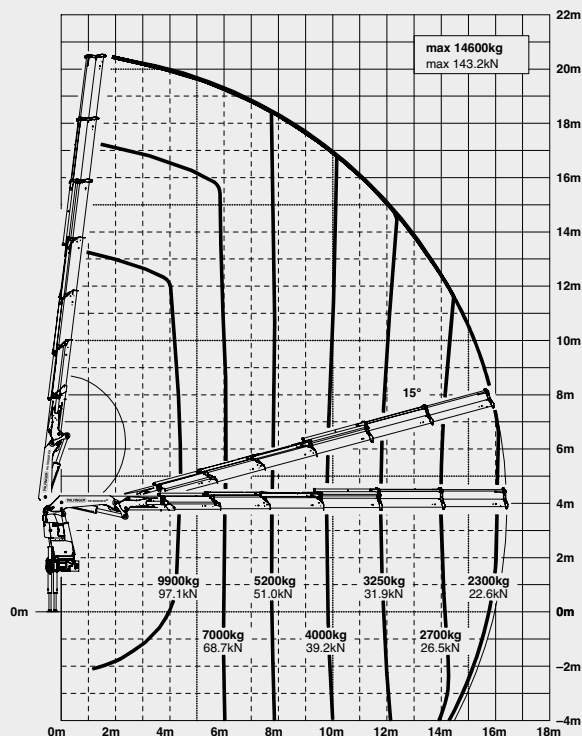


E PJ 125 E JV1 DPS PLUS

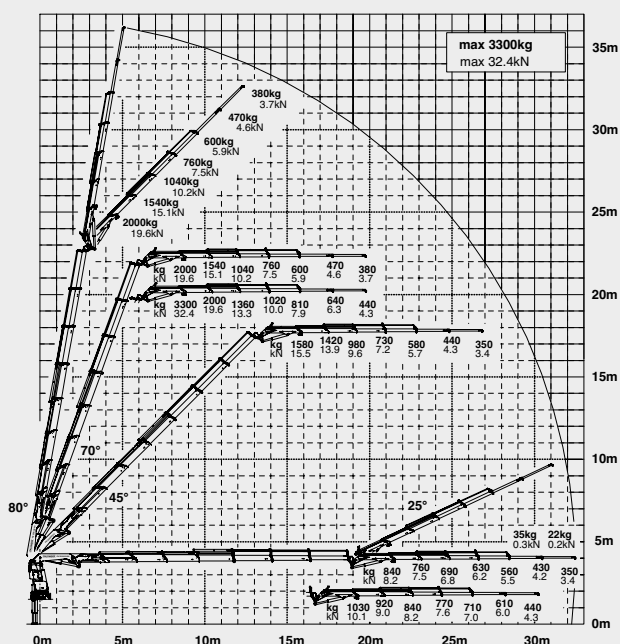


PERFECT FOR HIGH OUTREACHES

E



F PJ 080B JV2 DPS PLUS



LIFTING CAPACITIES

A	max.		16800 kg	37030 lbs
	4.1 m	13' 5"	11300 kg	24900 lbs
	5.8 m	19' 0"	8100 kg	17900 lbs
	7.6 m	24' 11"	6200 kg	13700 lbs

B	max.		16400 kg	36150 lbs
	4.2 m	13' 9"	11000 kg	24300 lbs
	5.8 m	19' 0"	7900 kg	17300 lbs
	7.6 m	24' 11"	6000 kg	13200 lbs
	9.6 m	31' 6"	4750 kg	10500 lbs

C	max.		16100 kg	35490 lbs
	4.2 m	13' 9"	10800 kg	13700 lbs
	5.8 m	19' 0"	7600 kg	16700 lbs
	7.6 m	24' 11"	5700 kg	12600 lbs
	9.6 m	31' 6"	4500 kg	10000 lbs
	11.6 m	38' 1"	3700 kg	8200 lbs

D	max.		15300 kg	33700 lbs
	4.3 m	14' 1"	10300 kg	22700 lbs
	6.0 m	19' 8"	7300 kg	16000 lbs
	7.8 m	25' 7"	5400 kg	12000 lbs
	9.7 m	31' 10"	4250 kg	9400 lbs
	11.7 m	38' 5"	3450 kg	7600 lbs
	13.9 m	45' 7"	2900 kg	6400 lbs

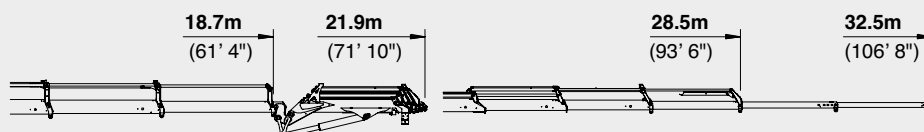
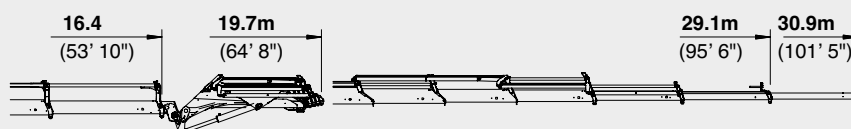
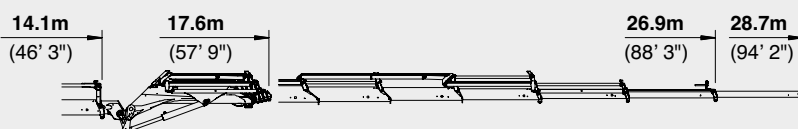
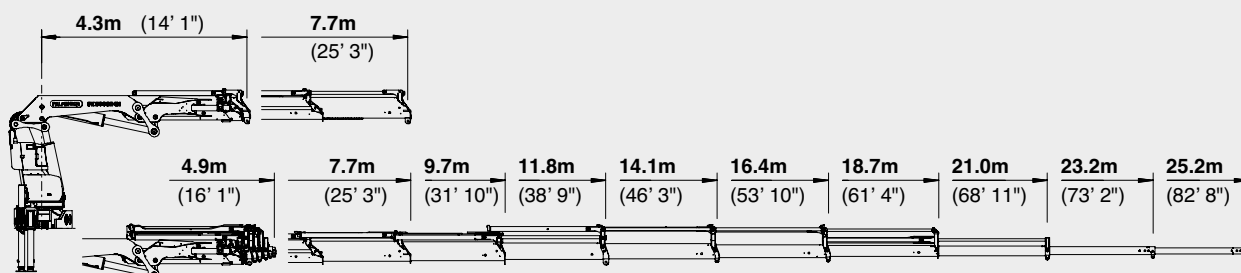
E	max.		14600 kg	32180 lbs
	4.4 m	14' 5"	9900 kg	21900 lbs
	6.1 m	20' 0"	7000 kg	15300 lbs
	7.9 m	25' 11"	5200 kg	11400 lbs
	9.8 m	32' 2"	4000 kg	8800 lbs
	11.8 m	38' 9"	3250 kg	7100 lbs
	14.0 m	45' 11"	2700 kg	5900 lbs
	16.2 m	53' 2"	2300 kg	5100 lbs

F	max.		14000 kg	30860 lbs
	4.5 m	14' 9"	9600 kg	21100 lbs
	6.2 m	20' 4"	6700 kg	14800 lbs
	8.0 m	26' 3"	5000 kg	10900 lbs
	9.9 m	32' 6"	3800 kg	8400 lbs
	11.9 m	39' 1"	3050 kg	6700 lbs
	14.1 m	46' 3"	2500 kg	5500 lbs
	16.4 m	53' 10"	2100 kg	4600 lbs
	18.6 m	61' 0"	1840 kg	4050 lbs

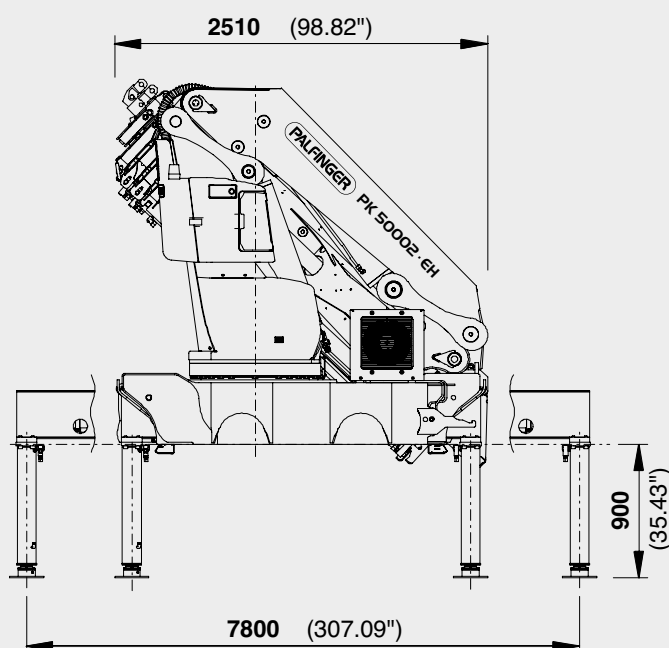
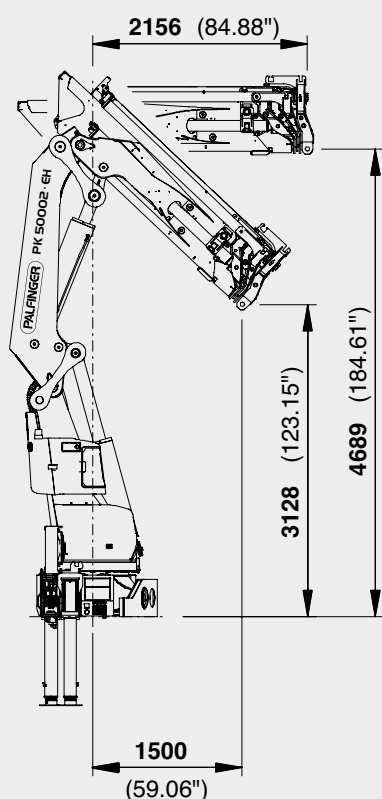
G	max.		13800 kg	30400 lbs
	4.5 m	14' 9"	9400 kg	20700 lbs
	6.2 m	20' 4"	6500 kg	14400 lbs
	8.0 m	26' 3"	4800 kg	10500 lbs
	9.9 m	32' 6"	3650 kg	8000 lbs
	12.0 m	39' 4"	2850 kg	6300 lbs
	14.2 m	46' 7"	2300 kg	5100 lbs
	16.4 m	53' 10"	1920 kg	4250 lbs
	18.6 m	61' 0"	1660 kg	3650 lbs
	20.8 m	68' 3"	1480 kg	3250 lbs
	23.0 m*	75' 6"	900 kg	1980 lbs
	25.0 m*	82' 0"	600 kg	1320 lbs

PERFECT DIMENSIONS

EXTENSION BOOM VARIATIONS



DIMENSIONS

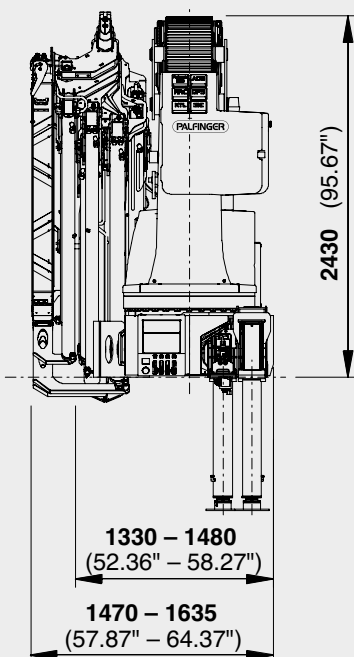


PK 50002 EH

D PJ125E JV1

E PJ125E JV1

F PJ080C JV2



TECHNICAL SPECIFICATIONS (EN 12999 HC1 HD4/B3)

Max. lifting moment	48.0 mt/470.9 kNm	347320 ft.lbs
Max. lifting capacity	17100 kg/167.8 kN	37700 lbs
Max. hydraulic outreach	21.0 m	68' 11"
Max. manual outreach	25.2 m	82' 8"
max. outreach (with fly-jib)	32.5 m	106' 8"
Slewing angle	endless	
Slewing torque with 1 gear	4.0 mt/39.2 kNm	28910 ft.lbs
Slewing torque with 2 gears	5.5 mt/54.0 kNm	39830 ft.lbs
Stabiliser spread	7.8 m	25' 7"
Fitting space required (std.)	min. 1.33 m / 4' 4"	max. 1.47 m / 4' 10"
Width folded	2.51 m	8' 3"
Max. operating pressure	350 bar	5075 psi
Recommended pump capacity	from 80 l/min to 100 l/min	21.1 US gal./min 26.4 US gal./min
Dead weight (std.)	4145 kg	9140 lbs

PACKAGE-MODELL

- E-HPLS
- Paltronic 50
- Radio remote control with LED display
- Danfoss control valve or PVG2000
- 10,5 kW oil cooler

